

Clinical Assessment of Foetal Malnutrition Using 'CAN Score' in Full Term Neonates

Girish Nanoti*, Seher Kamal**

Abstract

'Fetal Malnutrition' is the failure to acquire adequate quantum of fat and muscle mass during intrauterine growth. 'CAN score' (Clinical Assessment of Nutritional score) is a simple, practical, clinically applicable scoring system, developed to identify newborn babies with fetal malnutrition.

A cross-sectional study was undertaken at NKP Salve Institute of Medical Sciences and Research Centre and Lata Mangeshkar Hospital. The study group included 60 live full term neonates and duration of the study was two months.

The objectives of the study were:

1. To estimate occurrence of fetal malnutrition in full term neonates using CAN score.
2. To compare CAN score with other anthropometric criteria used to assess fetal growth.

The following results were obtained:

1. Out of 60 neonates, 7 (11.6%) had fetal malnutrition by CAN score.
2. A significant correlation was found between neonates classified as malnourished by CAN score and each of the criteria tested; like birth weight, length, head circumference and ponderal index. (p value < 0.001).

The study emphasizes the importance of CAN score as a simple clinical index for identifying Fetal Malnutrition and its potential to predict neonatal morbidity associated with Fetal Malnutrition without the aid of any sophisticated equipments

Keywords: CAN score; Fetal malnutrition; Ponderal index.

Introduction

Fetal malnutrition (FM) is the failure to acquire adequate quantum of fat and muscle mass during intrauterine growth. Fetal malnutrition (FM) is a term coined by Scott and Usher in 1966 to describe infants who showed evidence of soft tissue wasting at birth irrespective of the specific aetiology.[1] It is not

synonymous with either small for gestational age (SGA) or Intra Uterine growth Restriction (IUGR). In Fetal malnutrition, the subcutaneous tissues and underlying muscles are diminished and the skin of arms, legs, elbows, knees and interscapular regions is very loose. In severe FM, the neonate may look 'emaciated' or 'marasmic' as the skin appears 'several sizes' too large for the baby.

The assessment of nutrition at birth has been made using various systems. A simple, practical, clinically applicable scoring system CAN Score (Clinical Assessment of Nutritional Score) was developed by Metcalf.[2] It was developed to differentiate malnutrition from appropriately nourished babies, irrespective of birth weight. It is based on nine 'superficial' readily detectable signs of malnutrition in the newborn baby. Anthropometric parameters

Author Affiliation: *Associate Professor, Dept. of Paediatrics, **MBBS Student, NKP Salve Institute of Medical Sciences and Lata Mangeshkar Hospital, Nagpur, Maharashtra, India.

Reprint request: Dr. Girish Nanoti, Associate Professor, Dept. of Paediatrics, NKP Salve Institute of Medical Sciences and Lata Mangeshkar Hospital, Nagpur, Maharashtra, India.

E-mail: gir65suv@yahoo.co.in

like length, weight, and head circumference have also been used to assess the occurrence of fetal malnutrition.

The importance of addressing this hidden problem of fetal malnutrition is emphasized because of the potentially serious sequel of malnutrition on multiple organ systems with studies showing that 39% of fetally malnourished babies had intellectual and neurological handicaps, whether Appropriate for Gestational Age (AGA) or Small for Gestational Age (SGA).[3,4] Hence it is the need of the hour to promptly identify newborns with FM.

Objective

1. To estimate occurrence of fetal malnutrition in full term neonates using "CAN SCORE".
2. To compare CAN Score with other anthropometric criterion used to assess fetal growth.

Materials & Methods

Study Type: It is a cross sectional study.

Study Area: The study was undertaken in NKP Salve Institute of Medical Sciences & Research Centre & Lata Mangeshkar Hospital, Nagpur.

Study Group: The study group included 60 live, single, full term neonates and the duration of the study was 2 months. After obtaining an informed consent from parents, clinical assessment of nutrition and anthropometric evaluation was carried out and entered into the proforma.

Inclusion Criteria

1. Live born, singleton term infants
2. Infants whose hospital stay exceeds 24 hr.
3. Infants with Gestational age > 37 weeks.
4. Parents willing to give informed consent.

Exclusion Criteria

1. Babies with obvious congenital malformation.
2. Preterm newborns Postterm newborns
3. All observations were made in a warm well lighted room.

CAN Score was obtained on the basis of 9 superficial readily detectable signs of malnutrition in new born as described by Metcoff.[2] Each clinical sign of CAN Score was rated from 1 (severe FM) to 4 (well nourished). The highest attainable score was 36 and the lowest was 9. Foetal malnutrition was concluded in those with a CAN Score of less than 25.

Signs for Clinical Assessment of Nutritional Status in Newborn

1. *Hair:* Large amount, smooth, silky, easily groomed.[4] Thinner, some straight, "staring" hair.[3] Still thinner, more straight, "staring" hair which does not respond to brushing.[2] Straight "staring" hair with de pigmented stripe (flag sign). [1]
2. *Cheeks:* Progression from full buccal pads and round face[4], to significantly reduced buccal fat with narrow, flat face.[1]
3. *Neck and Chin:* Double or triple chin fat fold, neck not evident[4]; to thin chin. No fat fold, neck with loose, wrinkled skin, very evident.[1]
4. *Arms:* Full, round, cannot elicit "accordion" folds or lift folds of skin from elbow or tricep area[4]; to a striking "accordion" folding of lower arm, elicited when examiner's thumb and fingers of the left hand grasp the arm just below the elbow of the baby and thumb and fingers of the examiners right hand circling the wrist of the baby are moved towards each other; skin is loose and easily grasped and pulled away from the elbow.
5. *Legs:* Full, round, cannot elicit "accordion" folds or lift folds of skin[4]; to a striking "accordion" folding of lower leg, elicited

when examiner's thumb and fingers of the left hand grasp the leg just below the ankle of the baby and thumb and fingers of the examiners right hand circling the knee of the baby are moved towards each other; skin is loose and easily grasped and pulled away from the knee.

6. *Back*: Difficult to grasp and lift skin in the inter scapular area[4]; to skin loose, easily lifted in a thin fold from the inter scapular area.[1]
7. *Buttocks*: Full round gluteal fat pads[4]; to virtually no evident gluteal fat and skin of the buttocks and upper posterior high loose and deeply wrinkled.[1]
8. *Chest*: Full, round, ribs not seen[4]; to progressively prominence of the ribs with obvious loss of inter costal tissues.[1]
9. *Abdomen*: Full, round, no loose skin[4]; to distended or scaphoid, but with very loose skin, easily lifted, wrinkled and "accordion" folds demonstrable.-

Gestational age assessment was based on accurate recollection of date of last menstrual period by the mother and if a doubt exist, findings from recent ultrasound examination were taken into consideration and assessment of new born using Expanded New Ballard score was used to assign gestational age in completed weeks.

Weight was obtained by using digital scale with a capacity of 20kg's, and sensitivity of + 5 gm.

Head Circumference was measured with a non stretchable measuring tape just above the supra orbital prominence anteriorly and over the maximum occipital prominence posteriorly excluding the ears. Care was taken that the tape passed around the head at the same level on each side.

Length was measured using an

$$PI = \frac{\text{Weight} \times 100}{(\text{height})^3}$$

infantometer. A slight pressure was applied at newborn's knees to ensure full extension of lower extremities.

Ponderal Index was calculated by using the formula:

(where weight is taken in grams and height in centimetres)

All the new borns were broadly classified into various categories of malnutrition using the standards of weight, Length, Ponderal Index and Head circumference.

The obtained anthropometric parameters were compared to CAN Score and helped identify the method that was more useful in assessing fetal malnutrition. Then various types of malnutrition were compared with CAN SCORE viz. Weight, length, PI, head circumference Vs CAN SCORE .

Observation and Results

Out of 60 neonates 33 neonates were male and 27 neonates were female.

Total number of neonates tested were 60. Out of these 60 neonates,[7] had fetal malnutrition by CAN SCORE. Thus the Percentage of neonatal malnutrition in this study is 11.6% when CAN SCORE was used.

Out of 33 male neonates,[4] had fetal malnutrition with 12.1% Fetal Malnutrition amongst male when CANSORE was used. Similarly amongst female , the percentage of fetal malnutrition were 11.1%. No significant difference was found between male and female malnourished children, the rate of

Table 1

	Male	Female	Total
Total Population	33	27	60
Foetal Malnutrition by CAN SCORE	4 (12.1%)	3 (11.1%)	7 (11.6%)

Table 2

	Wt<2.5	Wt> 2.5	Total
Normal Neonates by CAN SCORE	9	44	53
Fetal Malnutrition by CAN SCORE	6	1	7
Total	15	45	60

Table 3

	PI<2	PI 2-2.5	P.I>2.5	Total
Normal neonates by CANSCORE	12	30	11	53
Fetal Malnutrition by CANSCORE	1	6	Nil	7
Total	13	35	12	60

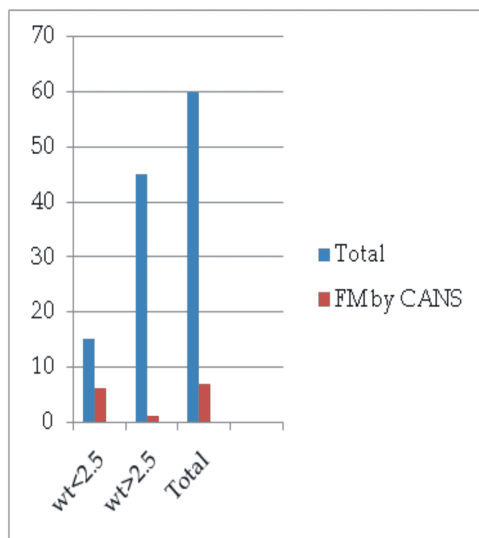
Table 4

	Length < 46.3cm	Length >46.3cm	Total
Normal Neonates by CAN SCORE	4	49	53
Fetal Malnutrition by CAN SCORE	5	2	7
Total	9	51	60

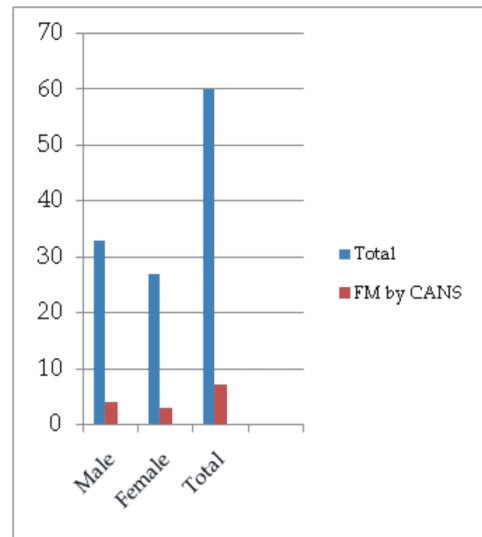
Table 5

	H.C< 32.1cm	H.C > 32.1 cm	Total
Normal Neonates by CANSCORE	5	48	53
Foetal Malnutrition by CAN SCORE	3	4	7
Total	8	52	60

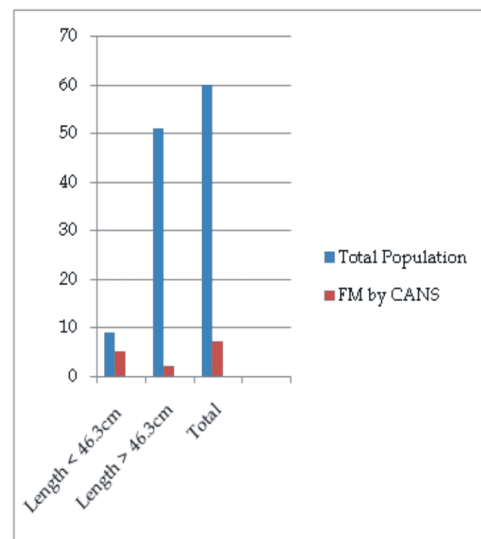
Graph 1



Graph 2



Graph 3

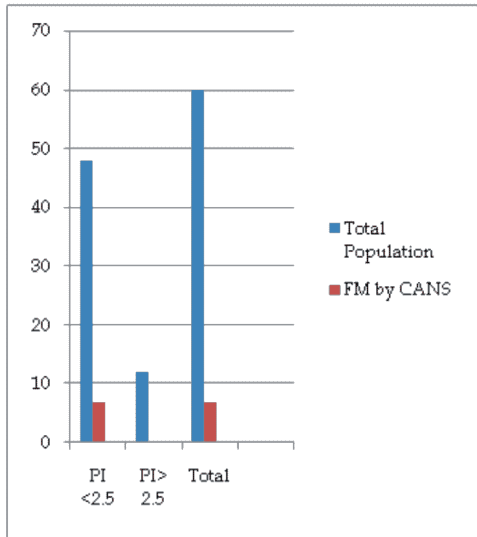


malnourishment were found to be almost similar in both the genders.

When fetal malnutrition by CANSCORE was compared with birth weight of neonates, it was found that 15 neonates had wt< 2.5 kg and those with normal birth weight were 45 neonates. Out of those fetally malnourished by CAN SCORE 6 had birth weight < 2.5. There was a significant correlation between neonates classified as malnourished by CANSCORE and by birth weight. (p value < 0.001).

When fetal malnutrition was compared with Ponderal Index 48 had Ponderal index

Graph 4



less than 2.5. All those who were classified fetally malnourished by CAN SCORE had Ponderal Index <2.5.

When Malnutrition was compared with length 9 had length < 46.3 cm and were classified fetally malnourished. Out of 7 who had fetal malnutrition by CAN SCORE 5 had length less than 46.3 cm. A significant correlation was found out between neonates classified malnourished by CANS CORE and length. (p <0.001)

When Head Circumference was compared 8 had Head circumference less than 32.1 cm.

Graph 5

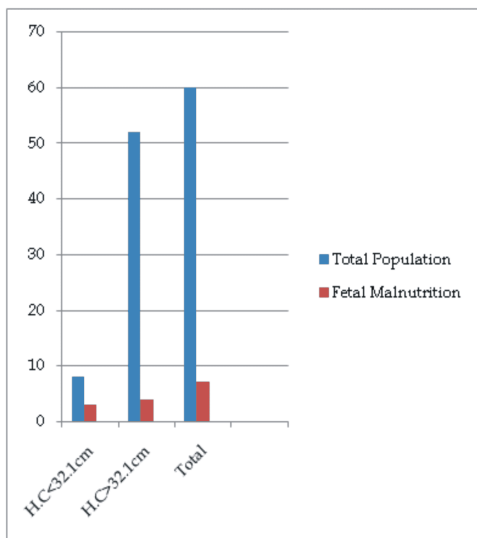


Figure 1: Neonate with Fetal Malnutrition



Figure 2: Well Nourished Neonate



Out of those who had fetal malnutrition by CAN SCORE 3 had head circumference less than 32.1 cm. A significant correlation was found out between neonates classified malnourished by Head Circumference and By CANS CORE (p < 0.001).

Discussion

The clinical manifestation of fetal malnutrition depend in part, on when it began during gestation. Babies whose length, head circumference and weight are significantly reduced probably were exposed to malnutrition beginning early in the first trimester. Those whose length and head circumference are less affected but are small

and underweight with some loss of subcutaneous tissue and muscle probably became malnourished beginning early in the third trimester. For babies who are significantly underweight with obvious loss of subcutaneous tissue, but with length and head circumference within the normal range, an insufficient or unbalanced nutrient supply most likely occurred in late third trimester.

In fetally malnourished infants, the subcutaneous tissue and underlying muscle mass are diminished. The skin appear too large for the baby at several sites. Buccal and buttock fat pads are reduced and scalp hair may be coarse, patchy, or 'straight and starrius'.

In this study consisting of 60 newborns which included 33 male and 27 female, the percentage of fetal malnutrition was 11.6% when CAN SCORE was used. Previous studies have also revealed Fetal Malnutrition of about 10% (Usher)[1] and 10.9% (Metcoff).[2]

In this study it was found out that almost all the babies who had fetal malnutrition by CANSCORE had birth weight < 2.5 kg. In this study, total 15 babies were having weight <2.5kg.

When correlated with Ponderal Index; all the patients with fetal malnutrition had Ponderal Index of <2.5 which implies that the babies who were having fetal malnutrition were either malnourished or hypoplastic on Ponderal Index . In this study out of 48 patients having foetal malnutrition by Ponderal Index, 7 were actually malnourished by CANSCORE.

When other anthropometric criterion were used like Length Head circumference and it was found out that out of 7 who had fetal malnutrition by CAN SCORE 5 had length less than 46.3 cm. A significant correlation was found out between neonates classified malnourished by CANSCORE and length and when Head Circumference was compared , 8 had Head circumference less than 32.1 cm. Out of those who had fetal malnutrition by CAN SCORE, 3 had head circumference less than 32.1 cm. A significant correlation was found out between neonates classified malnourished by Head Circumference and By

CANSCORE.

Summary & Conclusion

In the present study with sample of 60 neonates, a simple brief clinical assessment of Nutritional Status (CANSCORE) revealed 7 neonates were fetallymalnourished. Most of the new borns of weight <2.5kg were fetallymalnourished.

In this study CANSCORE detected 11.6 % of the full term neonates as fetally malnourished CAN Score is a simple technique. It does not require the use of any sophisticated equipments for assessment of foetal malnutrition. It is easy to carry out as the score contains the examination for nine clinical signs viz. hair, cheeks, neck, arms, chest, skin of abdominal wall (or abdomen), back, buttocks and legs. The score assess nutritional status of the foetus at birth. Features of fetal malnutrition are sought for in each baby using nine 'superficial' readily detectable signs. The advantage of CAN SCORE is that it is a simple, clinical index for identifying fetal malnutrition and thus it may have the potential to predict neonatal morbidity associated with fetal malnutrition without the aid of any sophisticated equipments.

Out of 22 million Low Birth weight babies, 21 million are born in developing countries. Large number of low birth weight babies are fetallymalnourished. Thus with the help of CANSCORE which is used for detection of a significant number of fetally malnourished newborns can be done easily.

Assessment of nutritional status of foetus is a major concern to clinician because of potentially serious sequaelae of malnutrition on Multiple Organ Systems, therefore there is a need for prompt identification of babies with fetal malnutrition. CAN Score is a simple clinically applicable scoring system for detection of Fetal Malnutrition at birth irrespective of birth weight and gestational age.

If fetal malnutrition might be prevented or corrected, millions of babies world wide would be spared of various sequelae of malnutrition and cardiovascular risk factor, metabolic problems and various neurological problems later in life.

References

1. Scott KK, Usher RH. Fetal malnutrition: Incidence, causes and effects. *Amer J Obstetr.* 1966; 94(7): 951-63.
2. Metcalf J. Clinical assessment of Nutritional status at birth. Fetal malnutrition and SGA are not synonymous. *Pediatr Clin North Am.* 1994; 41: 875-91.
3. Hill RM Verniaud WM, Deter RL, et al. The effect of intrauterine malnutrition on the term infant: a 14 year prospective study. *Acta Paediatr Scand.* 1984; 73(4): 482-7.
4. Adebami OJ, Owa JA, Oyedeji GA, et al. Prevalence and problems of foetal malnutrition in term babies at Wesley Guild Hospital, South Western Nigeria. *West Afr J Med.* 2007; 26(4): 278-82.
5. Rumboltz et al. *Obst. & Gynaecol.* 1953; 1: 294.
6. Sanjay Mehta, Anita Tandon et al. Clinical Assessment Of Nutritional Status At Birth, 1997. *Indian Pediatrics.* 1998; 35.
7. Drillien et al. *Archives Diseased Child.* 1956; 31: 390.
8. Preeti Waghmare, DN Balpande et al. Assessment of foetal malnutrition by Can Score. 2008
9. Abedimi Oj et al. 2008.
10. Liladhar Kashyap, Rashmi Dwivedi. Department of Paediatric Medicine, Gandhi Medical College, Bhopal.
11. Naveen Sankhyan, Vijay Kumar et al. Detection of Fetal Malnutrition using CANSCORE. *Indian J Paediatr.* 2009; 76(9): 903-906.
12. Mahlingham Saundarya et al. *Iran J. Paediatr.* 2012; 22(1): 70-76.

Red Flower Publication Pvt. Ltd,

CAPTURE YOUR MARKET

For advertising in this journal

Please contact:

International print and online display advertising sales

E-mail: redflowerpp1@vsnl.net / tel: +91 11 22754205, 45796900

Recruitment and Classified Advertising

E-mail: redflowerpp1@vsnl.net / tel: +91 11 22754205, 45796900

Disclaimer The opinion in this publication is those of the authors and is not necessarily those of the **Indian Journal of Trauma and Emergency Pediatrics** the Editor-in-Chief and Editorial Board. Appearance of an advertisement does not indicate **IJTEP** approval of the product or service.